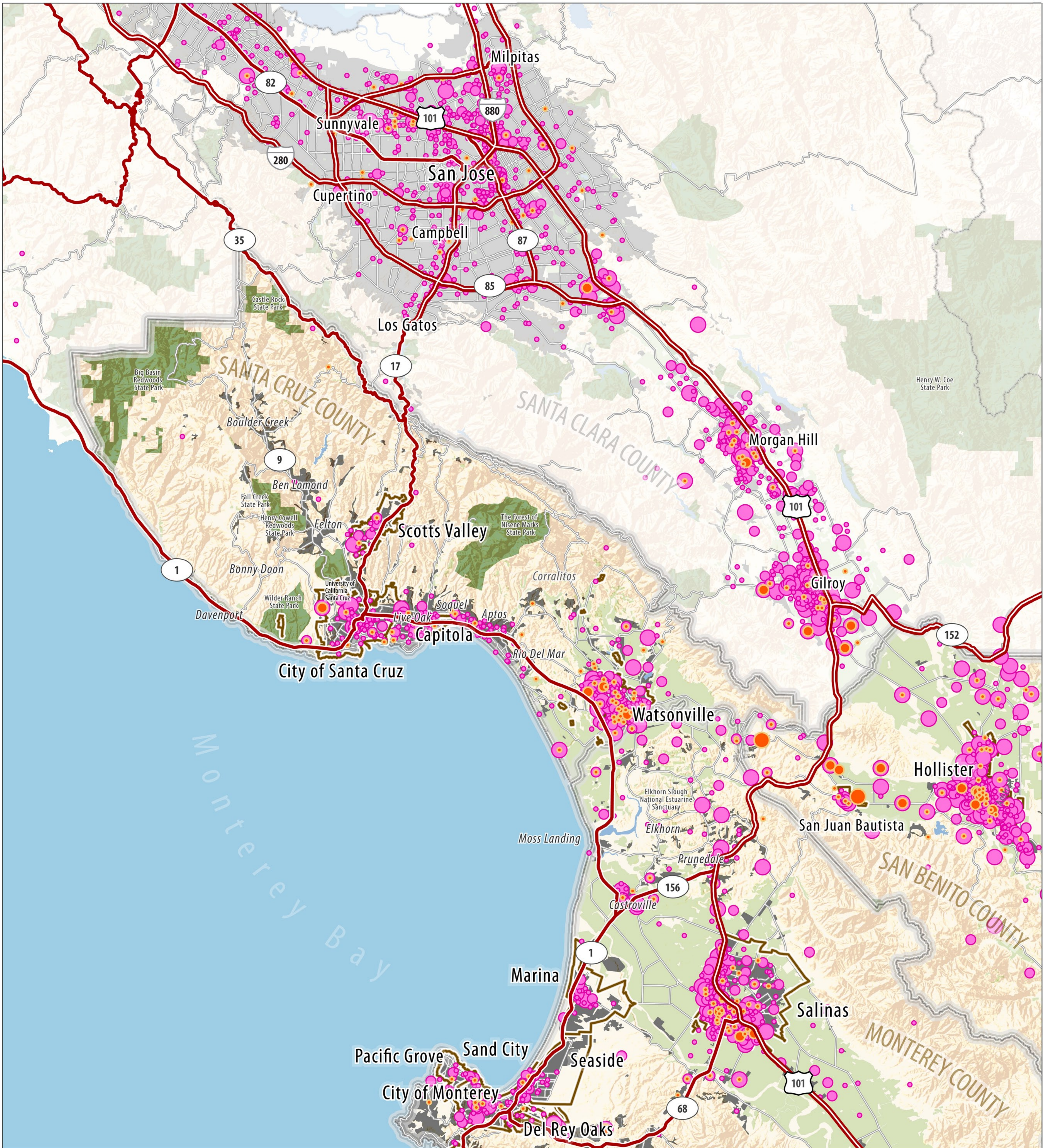


Where do Hollister & San Juan Bautista residents WORK?

Number of employees traveling from the City of Hollister and the City of San Juan Bautista per Census Block, 2008



Legend

City of Hollister Residents

- 1 to 2 employees
- 3 to 5 employees
- 6 or more employees

City of San Juan Bautista Residents

- 1 to 2 employees
- 3 to 5 employees
- 6 or more employees

- Limited Access
- Highway
- Major Road
- ▭ City Boundaries
- ▭ County Boundaries
- Urban and Built-Up Land
- Farmland
- Local, State and National Parks

City of Hollister

City/Place	Share of Jobs	Percentage	Distance to Hollister
Hollister	4,005	29%	0-4 miles
Gilroy	1,243	9%	16 miles
Salinas	760	6%	32 miles
San Jose	744	5%	47 miles
Morgan Hill	532	4%	26 miles
Watsonville	394	3%	26 miles
Santa Cruz	187	1%	45 miles
Monterey	184	1%	40 miles
San Francisco	146	1%	95 miles
Prunedale	126	1%	20 miles
All Other Locations	5,551	40%	

City of San Juan Bautista

City/Place	Share of Jobs	Percentage	Distance to SJB
Hollister	47	9%	8 miles
Salinas	46	9%	17 miles
Watsonville	39	7%	16 miles
Gilroy	36	7%	15 miles
San Jose	35	7%	45 miles
Morgan Hill	18	3%	25 miles
Aromas	11	2%	10 miles
Santa Cruz	10	2%	35 miles
Monterey	10	2%	33 miles
Sunnyvale	9	2%	55 miles
All Other Locations	268	51%	

Data Source: US Census Bureau, Location Employment Dynamics (LED) OnTheMap Origin-Destination Database



Date: June 2010
 Data Sources: AMBAG, CA Dept of Conservation Farmland Mapping and Monitoring Program;
 ESRI; US Census Bureau

Document Path: S:\GIS\Blueprint\MXD\Public\Workshop\Map\BP_SanBenitoCounty_CommuteShed.mxd
 X:\Blueprint_PublicParticipation_Map\BP_SanBenitoCounty_CommuteShed.mxd
 S:\Blueprint\BP\Public\Choreographer\Map\BP_SanBenitoCounty_CommuteShed.pdf